

Scene-by-Scene Walkthrough

Q1: Queue: The Green House

On the edge of the forest sits an abandoned greenhouse that remains from the time the forest was used as a botanical garden. Vines, trees, and other plants intertwine with the glass panes and metal structure. The sign for Conservation Quest is affixed above the opening into the greenhouse, greeting guests inside. The queue weaves throughout the greenhouse until it approaches the back wall of the building, where an entire glass pane has fallen away leaving an opening into the forest. Trees have grown on either side of this opening to create something like a tunnel that leads back into the forest.



Q2, Q3: Queue: The Forest



The queue continues into the forest, weaving and twisting through trees.

Q4: Pre-Show: The Clearing

The twisting path brings guests to a large, circular clearing in the forest. The trees are thinner here, allowing the guests to see the natural landforms that surround the forest.

Animals playfully interact with the guests - deer peek out from behind trees, squirrels jump from branch to branch, birds dive and chase each other through the air, and butterflies flutter to and fro.

Suddenly, the wind begins to pick up, rustling the leaves in the trees, creating a whoosh that sounds like a whisper. That whisper grows louder until it becomes a voice that begins to speak to the guests. As the voice speaks, the butterflies begin to fly in unison reacting to the voice, as if they are the visual representation of what the voice is saying.



Q4: Pre-Show: The Clearing (cont.)

The voice introduces herself as Mother Nature. She explains how Naturalia came to be such a unique forest setting after the botanical garden that was once built here was abandoned. She explains that she has been helping the forest ecosystem to recover, and that there is a certain area of the forest that she has been keeping her eye on.

Mother Nature then invites guests to travel with her to this section of the forest where they will act as conservationists by researching what animals are currently living there. Mother Nature is specifically hoping to find beavers and bison living in the forest since these two species play a pivotal role in the ecosystem.



Q4: Pre-Show: The Clearing (cont.)

As Mother Nature promises that she will be with the guests on their journey. As she concludes her invitation, the butterflies fly toward a large bush at the edge of the clearing. The push back the leaves and branches to create an opening that leads back into the forest, beckoning the guests to follow them through.



Q5: Loading

After the guests move through the bush from the clearing, they find themselves back in a denser section of the forest. Here, special "cocoon" that have been created by Mother Nature float by. Each of the cocoons is camouflaged with natural materials like vines and leaves, with wooden lanterns built into the front. Once guests load into their cocoons, they head off to start their adventure.



S1: Lighting the Lanterns

The cocoon begins to slowly wind through the forest of Naturalia, where they see more remnants from the past botanical garden. .

Mother Nature speaks to the guests in their cocoon and explain how to maneuver the lanterns to illuminate different objects in the forest. As the plants and animals are illuminated by the light from the lantern, they react either by moving or emitting a sound.

Butterflies open and close their wings. A wild boar stares you down and stomps its foot. The capercaillie rustle their wings as you pass, and the chamois brandishes its horns. The steppe polecat and mink are harder to see as they hide behind rocks and fallen trees.



S2: Leaving Naturalia

Mother Nature remarks about how well the guests have learned to use their lanterns and declare that it is time for them to travel to the special section of the forest.

The cocoon quickly approaches a long stretch of thick foliage that seem impenetrable. Once again, a kaleidoscope of butterflies appears and pushes the branches and foliage aside to create an opening for your cocoon.



S3: On the Forest Floor

When the cocoon emerges from the foliage, guests find themselves in the special, unhealed area of the forest. Equipped with their lanterns, they begin to illuminate the plants and animals around them. Birds and squirrels populate the tree branches, rabbits crouch behind boulders, and fungi glow against the shadows of dusk.

A bear and its two cubs rest just beyond the mouth of a cave while a lynx grooms itself above on a rocky ledge above. A marten perches on its back legs as you approach, and two badgers playfully peek out from the inside of a fallen tree. A fox eyes you questioningly, and a deer and its fawn relax as the sun continues to set.



S4: Going Up

As the cocoon continues through the forest, the path forward is suddenly blocked when a tree shifts and falls creating a barrier that prevents the guests from traveling any farther.

Mother Nature calms the guests, declaring they will just have to go up and over the trees.

The cocoon begins to ascend vertically, overlooking the forest floor scene below. The lanterns extinguish themselves during the ascent, but the butterflies return to accompany the guests up into the trees. Once the cocoon reaches the top of the ascent, the lanterns relight and the journey continues.



S5: Up in the Trees

High in the treetops, guests get a closer view of many of the birds that live in the forest.

Three-toed woodpeckers knock against tree trunks. Lesser Kestrels and Ring Ouzels rustle their feathers as prepare to sleep.

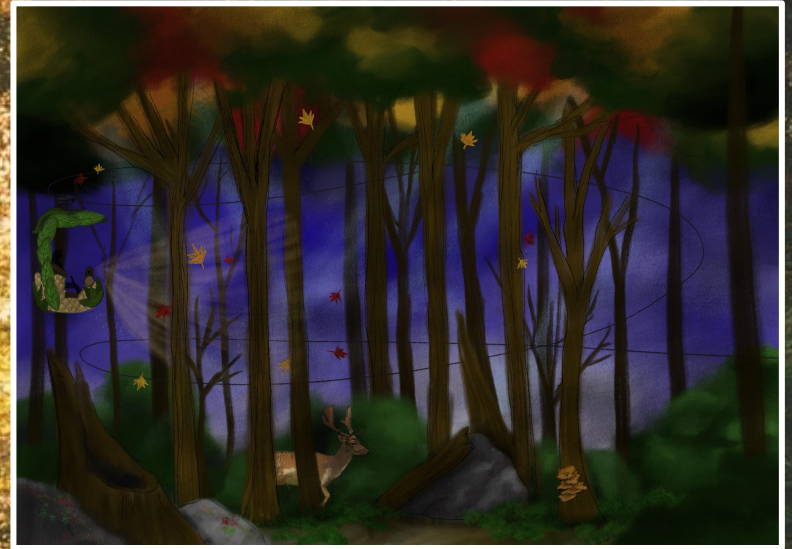


S6: The Spiral Down

After a short time in the treetops, the cocoon begins to descend back toward the forest floor in a large, spiraling motion. Fireflies dance through the darkening sky as the cocoon passes.

There are fewer animals in this section of the forest. A few birds and squirrels linger in the tree branches. A deer stands among the bottom of the tree trunks, munching on foliage.

As the cocoon reaches the forest floor, it approaches the opening to what appears to be a rather large, underground tunnel. Mother Nature wonders aloud about what creature live underground in the forest, and the cocoon lurches forward and dips into the darkness.



S7: Underground

The only sources of light in the tunnel are the fading streaks of sunlight that stream through a few openings in the ceiling and the light from the guests' lanterns.

Stag beetles climb the walls, opening and closing their massive pinchers. Fire salamanders dart to and fro along the roots that grow through the tunnel ceiling. An adder raises its head, ready to strike at anything that lingers too close. Birch mice scurry between various holes in the tunnel.

At the end of the tunnel, the cocoon slopes back up onto the main forest floor. Here, a small stream trickles by, beckoning you to follow.



S8: Along the River

The small stream quickly joins a magnificent river that runs through the forest. The cocoon begins to follow the path of the river, which is inhabited by a variety of animals.

Mother Nature is thrilled to see that beavers and bison are both among the animals living near the river.

Beavers rest around the lodge and dam, splashing the water with their tails. Bison graze on the grass near the water's edge. Frogs extend their tongues as they attempt to catch dinner. Toads croak loudly on the river bank, inflating their vocal sacs. Otters lounge on the rocks, raising their heads to greet you as your cocoon passes.



S9: Return to Naturalia

The cocoon departs from the river, steering back toward the edge of the forest. Another long line of thick foliage blocks the path forward, but once again, the butterflies return to push the leaves and branches away to make a clearing for the guests to travel through.

Mother Nature remarks that she is very pleased with all of the animals that you found today. She thanks you for your help researching the forest, and encourages you to use the lessons you have learned today to protect natural habitats beyond Naturalia.



E1: Unloading



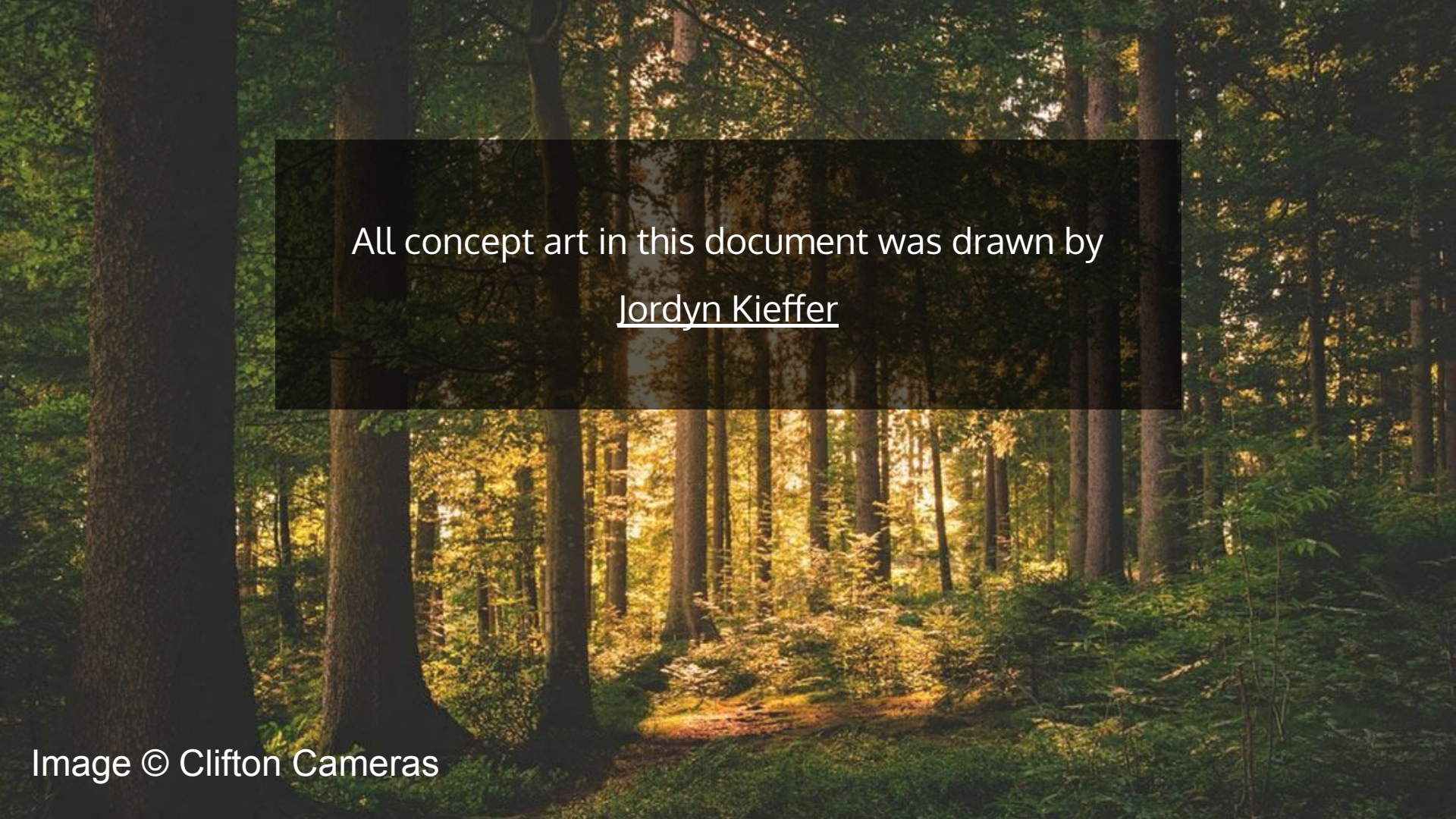
After passing through the bushes, the guests arrive back in the forest of Naturalia.

Mother Nature thanks you a final time as you leave your cocoon.

E2: Exit

After exiting their cocoon, guests make their way through the forest toward a tunnel made of roots and vines. The beginning of the tunnel is very thick, but the vines and roots thin out as guests make their way through the tunnel, eventually ending altogether as the guests arrive back in the land of Naturalia.



A photograph of a sunlit forest path. The path is a narrow, dirt trail that winds through a dense forest of tall, thin trees. Sunlight filters through the canopy, creating a dappled pattern of light and shadow on the ground. The trees are mostly deciduous, with some showing early autumn colors. The overall atmosphere is peaceful and serene.

All concept art in this document was drawn by
Jordyn Kieffer

Image © Clifton Cameras